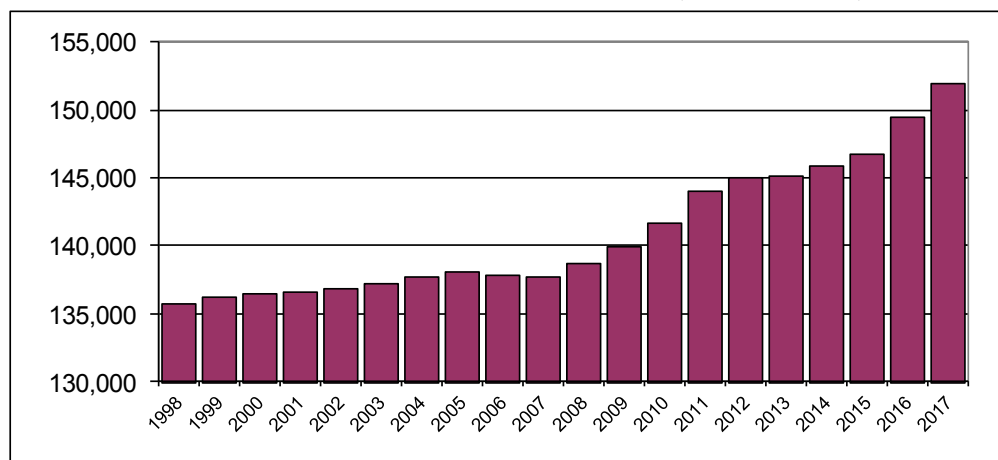




## PRINCE EDWARD ISLAND POPULATION REPORT 2017

### OVERVIEW

DIAGRAM 1: PRINCE EDWARD ISLAND POPULATION, AS OF JULY 1, 1998 - 2017



On September 27, 2017 Statistics Canada published its preliminary provincial population estimates for July 1, 2017, as well as revisions to the 2013 to 2016 population estimates. As of July 1, 2017, Prince Edward Island's population is estimated to be 152,021. This represents a yearly increase of 2,549 persons or a 1.7 per cent annual growth rate. This was the second highest growth rate in the country, behind only Nunavut at 2.2 per cent.

International immigration increased for the second consecutive year, rising by 12.4 per cent in 2016-17 following a 50.5 per cent increase in 2015-16. From July 2016 to June 2017, 2,264 international immigrants came to the province, as compared to 2,015 the previous year. At a rate of 15.0 per thousand<sup>1</sup>, the province had the highest immigration rate in the country, ahead of Saskatchewan at 12.4 per thousand. The immigration rate for Canada was 7.5 per thousand. In addition, other international migration components resulted in a net increase of 645 persons. This results in a total increase of 2,909 due to international migration, which is a new all time high for Prince Edward Island.

A total of 3,268 inter-provincial migrants came to PEI in 2016-17, while 3,704 people left the province for other areas of Canada for a net interprovincial loss of 436 persons. There were 1,448 births and 1,372 deaths on Prince Edward Island from July 1, 2016 to June 30, 2017, resulting in natural growth (births minus deaths) of 76.

<sup>1</sup> Immigration rates are calculated by the PEI Statistics Bureau based on Statistics Canada population estimates.

Statistics Canada also released revisions to the 2013 to 2016 population estimates. The revised estimates and growth rates for Canada and Prince Edward Island can be seen in Table 1.

**TABLE 1: NATIONAL AND PROVINCIAL POPULATION & GROWTH RATES, JULY 1**

July 1	Canada		Prince Edward Island	
	Population	Growth rate (%)	Population	Growth rate (%)
2008	33,245,773	1.1	138,764	0.8
2009	33,628,571	1.2	139,909	0.8
2010	34,005,274	1.1	141,678	1.3
2011	34,342,780	1.0	144,038	1.7
2012	34,750,545	1.2	145,080	0.7
2013 <sup>(r)</sup>	35,152,370	1.2	145,198	0.1
2014 <sup>(r)</sup>	35,535,348	1.1	145,915	0.5
2015 <sup>(r)</sup>	35,832,513	0.8	146,791	0.6
2016 <sup>(r)</sup>	36,264,604	1.2	149,472	1.8
2017 <sup>(p)</sup>	36,708,083	1.2	152,021	1.7

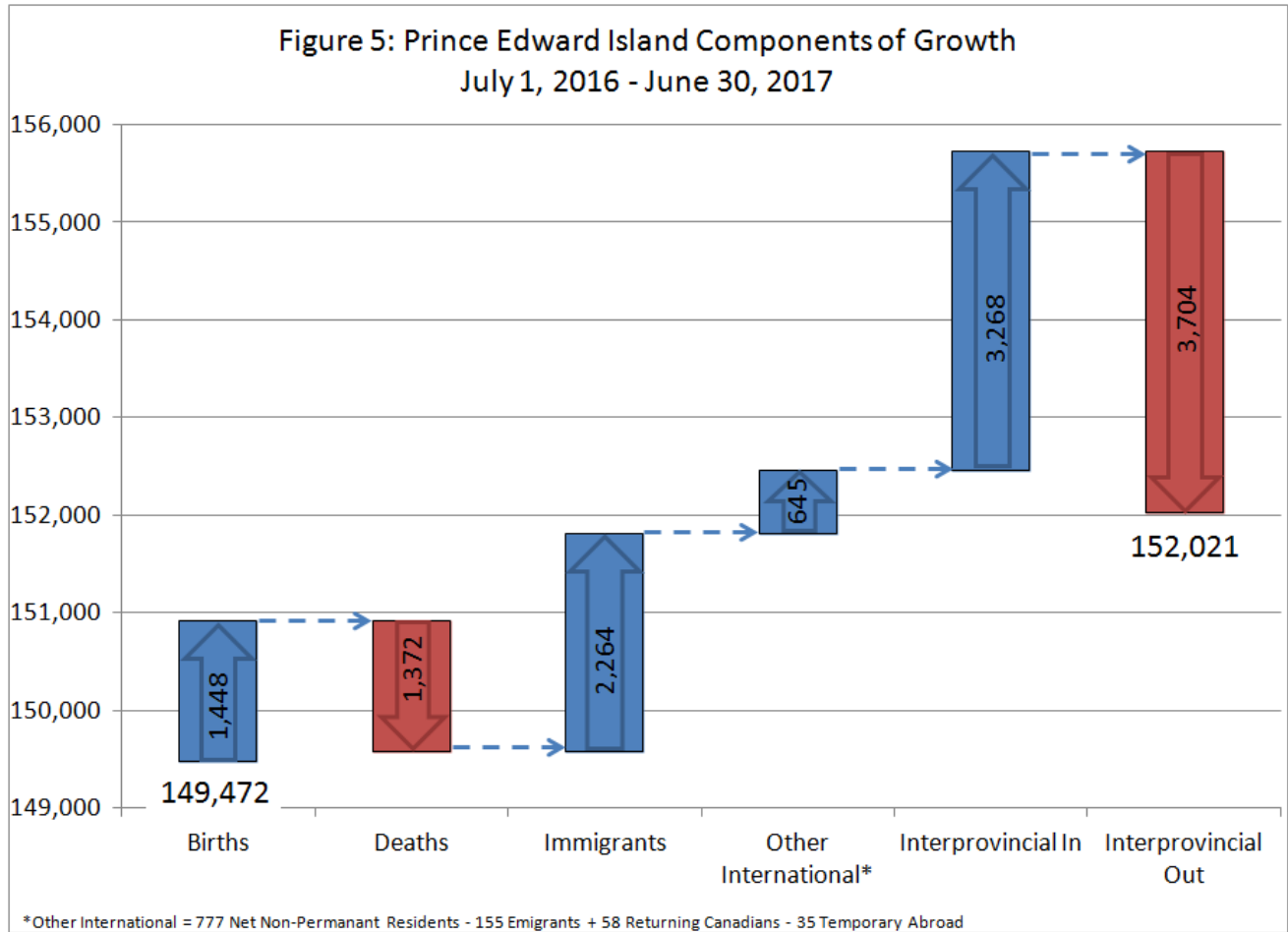
Newfoundland and Labrador and the Northwest Territories were the only jurisdictions to see population decline in 2017. Population estimates for July 1, 2016 and 2017 for all provinces and territories are shown in Table 2 below. The population growth rates for the twelve-month period ending June 30, 2017 are also included.

**TABLE 2: POPULATION OF PROVINCES & TERRITORIES, JULY 1, 2016, 2017 & ANNUAL GROWTH RATES**

	2016	2017	Growth
<b>CAN</b>	36,264,604	36,708,083	1.2%
<b>NL</b>	530,305	528,817	-0.3%
<b>PEI</b>	149,472	152,021	1.7%
<b>NS</b>	948,618	953,869	0.6%
<b>NB</b>	757,384	759,655	0.3%
<b>QC</b>	8,321,888	8,394,034	0.9%
<b>ON</b>	13,976,320	14,193,384	1.6%
<b>MB</b>	1,318,115	1,338,109	1.5%
<b>SK</b>	1,148,588	1,163,925	1.3%
<b>AB</b>	4,236,376	4,286,134	1.2%
<b>BC</b>	4,757,658	4,817,160	1.3%
<b>Terr.</b>	119,880	120,975	0.9%

## COMPONENTS OF GROWTH<sup>2</sup>

DIAGRAM 2: PRINCE EDWARD ISLAND COMPONENTS OF GROWTH JULY 1, 2016 – JUNE 30, 2017



### *Natural Increase*

Preliminary estimates for 2015-16 showed negative natural increase (births minus deaths) for PEI for the first time. Revisions to those estimates now show natural increase remains positive, although still below 100. Births and deaths both increased slightly in 2016-17, resulting in little change in natural increase. There were 1,448 births and 1,372 deaths on Prince Edward Island from July 1, 2016 to June 30, 2017, for natural increase of 76, compared to 70 for 2015-16.

<sup>2</sup> Components of growth are from July 1 to June 30.

**TABLE 3: PRINCE EDWARD ISLAND POPULATION  
AND COMPONENTS OF GROWTH, 2007 – 2017**

Year	July 1 Population	July 1 - June 30						
		(+) Births	(-) Deaths	(+) Immigrants	(+) Other International*	(+) Interprovincial In-Migration	(-) Interprovincial Out-Migration	(-) Residual
2007	137,721	1,447	1,166	1,282	204	2,821	3,112	433
2008	138,764	1,471	1,274	1,723	193	2,522	3,058	432
2009	139,909	1,407	1,177	1,792	119	2,709	2,649	432
2010	141,678	1,428	1,176	2,609	80	2,494	2,704	371
2011	144,038	1,404	1,247	1,379	124	2,620	3,238	0
2012	145,080	1,339	1,239	863	56	2,294	3,195	0
2013	145,198	1,408	1,299	1,400	149	2,198	3,139	0
2014	145,915	1,408	1,324	1,339	135	2,367	3,049	0
2015	146,791	1,421	1,351	2,015	566	2,874	2,844	0
2016	149,472	1,448	1,372	2,264	645	3,268	3,704	0
2017	152,021							

\*Other International = Net Non-Permanent Residents - International Emigrants + Returning Canadians - Canadians Temporarily Abroad

### ***Migration***

Net international migration was estimated to be 2,909 persons. This consisted of 2,264 international immigrants, 777 non-permanent residents, and 58 returning Canadians entering the province, while 155 international emigrants and 35 temporarily abroad Canadians left the province. The number of international immigrants coming to PEI in 2015/16 increased by 12.4 per cent compared to the previous 12 months. This follows a 50.5 per cent increase in immigrants in 2015/16. The immigration rate per thousand persons was 15.0 in 2016/17, up from 13.6 in 2015/16.

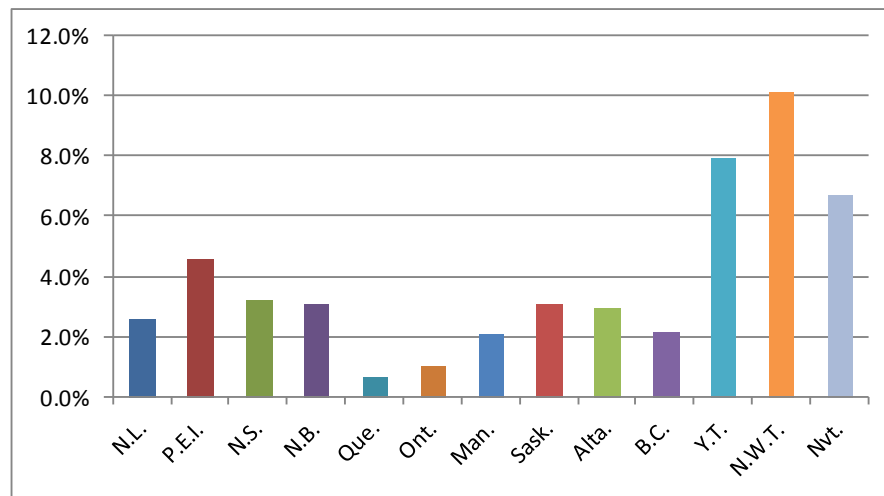
Between July 1, 2016 and June 30, 2017, Prince Edward Island had an estimated net inter-provincial out migration of 436 people (3,268 in-migrants less 3,704 out-migrants). Revisions to the 2015-16 estimates now show that net inter-provincial migration for PEI over that period was 30, the first time for positive inter-provincial migration since 2008-09.

As shown in Table 4, the primary source of PEI's inter-provincial in-migrants during this period was from Ontario, followed by Nova Scotia, Alberta, New Brunswick, and British Columbia. The main destinations of out-migrants from Prince Edward Island were to Ontario, Nova Scotia, Alberta, New Brunswick, and British Columbia. All provinces east of Ontario showed net out migration, with the exception of Nova Scotia. Ontario saw the largest gain from in-migration, as 36.7 per cent of all interprovincial migrants from other provinces were destined for Ontario. In terms of gross flows, PEI had the most mobile population among provinces but well below the percentage of people moving to and from the Territories. Diagram 3 shows gross flows of interprovincial migrants as a percentage of total population for the provinces and territories for 2016/17.

**TABLE 4: ORIGIN & DESTINATION OF INTER-PROVINCIAL MIGRANTS,  
JULY 1, 2016 TO JUNE 30, 2017**

ORIGIN	DESTINATION												
	N.L.	P.E.I.	N.S.	N.B.	Que.	Ont.	Man.	Sask.	Alta.	B.C.	Y.T.	N.W.T.	Nvt.
N.L.	0	196	1,084	442	455	2,834	114	137	1,733	566	8	49	91
P.E.I.	97	0	488	388	143	1,635	43	110	444	306	6	27	17
N.S.	575	513	0	1,928	819	5,984	465	303	2,814	1,308	32	106	124
N.B.	462	411	2,166	0	1,594	3,860	250	337	1,929	764	30	66	85
Que.	322	139	880	1,785	0	21,825	465	321	3,436	3,343	51	78	121
Ont.	1,569	1,080	4,904	3,003	11,305	0	2,857	2,432	14,645	15,219	359	335	516
Man.	152	49	493	258	554	5,803	0	2,018	3,612	4,137	47	89	30
Sask.	72	22	307	179	481	4,881	1,618	0	8,476	4,505	73	31	35
Alta.	1,952	513	3,374	2,233	3,339	20,715	2,604	6,846	0	28,197	263	649	107
B.C.	351	267	1,590	771	3,051	15,234	1,709	2,219	17,481	0	441	210	96
Y.T.	8	29	99	34	54	238	41	120	231	645	0	85	0
N.W.T.	120	31	139	39	95	464	57	165	788	538	136	0	98
Nvt.	75	18	92	45	117	440	113	57	72	55	24	108	0
	<b>N.L.</b>	<b>P.E.I.</b>	<b>N.S.</b>	<b>N.B.</b>	<b>Que.</b>	<b>Ont.</b>	<b>Man.</b>	<b>Sask.</b>	<b>Alta.</b>	<b>B.C.</b>	<b>Y.T.</b>	<b>N.W.T.</b>	<b>Nvt.</b>
<b>IN</b>	5,755	3,268	15,616	11,105	22,007	83,913	10,336	15,065	55,661	59,583	1,470	1,833	1,320
<b>OUT</b>	7,709	3,704	14,971	11,954	32,766	58,224	17,242	20,680	70,792	43,420	1,584	2,670	1,216
<b>NET</b>	-1,954	-436	645	-849	-10,759	25,689	-6,906	-5,615	-15,131	16,163	-114	-837	104

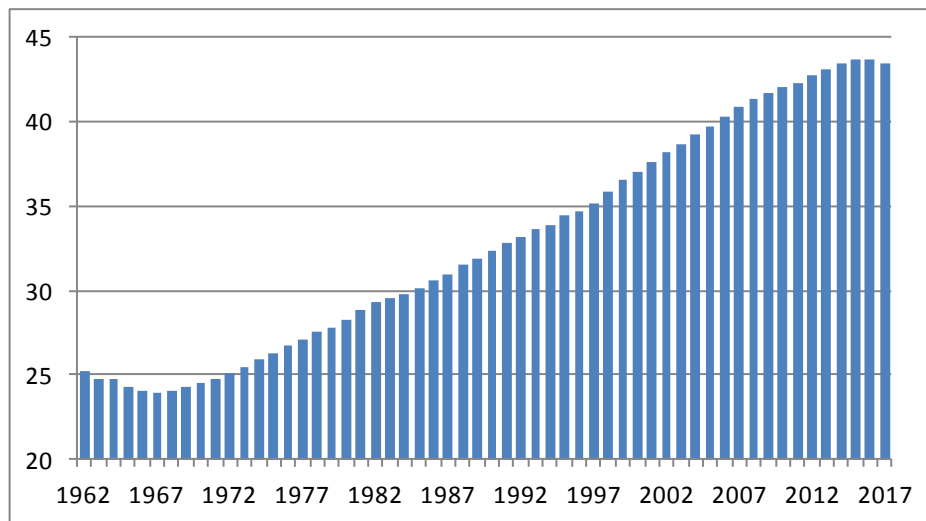
**DIAGRAM 3: GROSS FLOW OF INTERPROVINCIAL MIGRANTS AS PERCENTAGE OF TOTAL POPULATION,  
PROVINCES AND TERRITORIES, JULY 1, 2016 – JUNE 30, 2017**



## POPULATION BY AGE AND GENDER

On July 1, 2017, Prince Edward Island's population consisted of 77,666 females (51.1 per cent) and 74,355 males (48.9 per cent). The median age<sup>3</sup> on Prince Edward Island on July 1, 2017 was 43.5, a decline of 0.2 over 2016, the first time the median age for PEI has declined since 1967. The median age in 2007 was 40.9 and 35.2 in 1997. Since a low of 23.9 in 1967, the median age has risen by 19.6 years (see diagram 4).

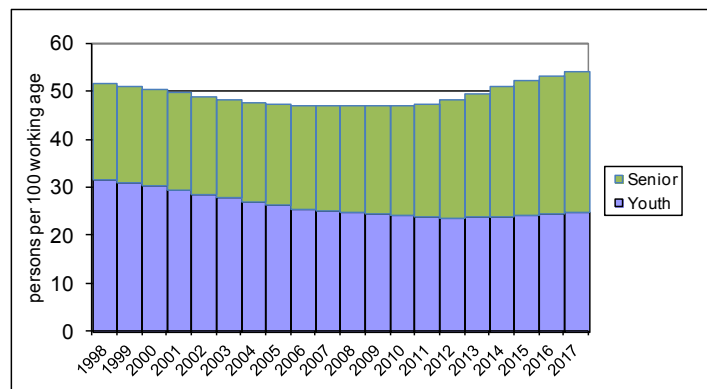
DIAGRAM 4: PRINCE EDWARD ISLAND MEDIAN AGE, 1962 – 2017



The aging of the population is also evident when looking at the dependency ratios. The total dependency ratio is the ratio of persons under age 15 plus those aged 65 and older to the working age population 15 – 64. It is expressed as the number of youth and seniors per 100 persons aged 15 to 64. The youth dependency ratio is the ratio of the youth population to the working age population, while the senior dependency ratio is the ratio of the senior population to the working age population.

The total dependency ratio for PEI declined steadily from the early '70s until 2007, where it was lowest at 46.7. This was due to a declining youth dependency ratio as the number of 0 – 14 year olds declined and the working age population increased. The senior ratio remained relatively unchanged over this period, rising by only 2.7 from 1971 to 2007. From 2007 to 2017, the senior dependency ratio has risen by 7.4, of which 4.8 has been over just the last 5 years. This increase in the senior ratio can clearly be seen in diagram 5.

DIAGRAM 5: PRINCE EDWARD ISLAND DEPENDENCY RATIOS, 1998 – 2017



<sup>3</sup> The median age is the age at which exactly half the population is older and half the population is younger.

The under 45 population has increased by 1.5 per cent since 2007, while the population aged 45 and over has increased by 21.9 per cent over the same period. Table 5 shows the age and gender breakdown of PEI's July 1, 2017 population, as well as the rate of change from 5 and 10 years ago.

**TABLE 5: PRINCE EDWARD ISLAND POPULATION BY AGE AND GENDER,  
JULY 1, 2017 & 5 AND 10 YEAR RATES OF CHANGE**

	July 1, 2017 Population				% change from July 1, 2012			% change from July 1, 2007		
	Male	Female	Total	% of Total	Male	Female	Total	Male	Female	Total
<b>Total</b>	<b>74,355</b>	<b>77,666</b>	<b>152,021</b>		<b>5.0%</b>	<b>4.5%</b>	<b>4.8%</b>	<b>10.5%</b>	<b>10.3%</b>	<b>10.4%</b>
<b>0 - 14</b>	12,268	12,051	24,319	16.0	5.1%	6.2%	5.6%	2.9%	5.7%	4.3%
<b>0-4</b>	3,812	3,656	7,468	4.9	2.5%	1.5%	2.0%	11.7%	8.7%	10.2%
<b>5-9</b>	4,255	4,287	8,542	5.6	11.6%	12.8%	12.2%	10.1%	15.5%	12.8%
<b>10-14</b>	4,201	4,108	8,309	5.5	1.5%	4.0%	2.7%	-9.5%	-5.1%	-7.4%
<b>15 - 29</b>	14,303	13,417	27,720	18.2	2.8%	-0.9%	1.0%	6.3%	-0.7%	2.8%
<b>15-19</b>	4,535	4,115	8,650	5.7	-9.6%	-11.0%	-10.3%	-10.0%	-16.2%	-13.0%
<b>20-24</b>	5,356	4,703	10,059	6.6	9.4%	-3.5%	2.9%	17.2%	4.0%	10.6%
<b>25-29</b>	4,412	4,599	9,011	5.9	10.2%	13.7%	12.0%	14.6%	12.6%	13.6%
<b>30 - 44</b>	12,855	13,880	26,735	17.6	-0.4%	0.9%	0.3%	-5.0%	0.5%	-2.2%
<b>30-34</b>	4,124	4,378	8,502	5.6	3.1%	2.1%	2.6%	4.2%	8.0%	6.2%
<b>35-39</b>	4,378	4,855	9,233	6.1	5.6%	9.4%	7.5%	0.2%	9.0%	4.7%
<b>40-44</b>	4,353	4,647	9,000	5.9	-8.6%	-7.6%	-8.1%	-16.4%	-12.4%	-14.4%
<b>45 - 59</b>	16,600	16,909	33,509	22.0	0.1%	-1.6%	-0.8%	8.7%	5.0%	6.8%
<b>45-49</b>	5,279	5,289	10,568	7.0	-6.4%	-7.8%	-7.1%	-1.3%	-6.4%	-3.9%
<b>50-54</b>	5,796	5,706	11,502	7.6	2.1%	-1.9%	0.1%	15.0%	5.0%	9.8%
<b>55-59</b>	5,525	5,914	11,439	7.5	5.0%	5.0%	5.0%	13.4%	17.8%	15.6%
<b>60 - 74</b>	13,759	14,728	28,487	18.7	18.4%	21.0%	19.7%	45.6%	50.9%	48.3%
<b>60-64</b>	5,159	5,657	10,816	7.1	4.0%	9.0%	6.6%	26.0%	38.6%	32.3%
<b>65-69</b>	4,822	5,082	9,904	6.5	20.6%	24.6%	22.7%	63.1%	68.0%	65.6%
<b>70-74</b>	3,778	3,989	7,767	5.1	41.7%	37.4%	39.5%	57.4%	50.2%	53.6%
<b>75+</b>	4,570	6,681	11,251	7.4	11.5%	6.5%	8.5%	24.5%	14.7%	18.5%
<b>Under 45</b>	39,426	39,348	78,774	51.8	2.4%	1.8%	2.1%	1.3%	1.6%	1.5%
<b>45 and Over</b>	34,929	38,318	73,247	48.2	8.1%	7.5%	7.8%	23.1%	20.9%	21.9%

**Sources:**

Statistics Canada. Table 051-0001 - Estimates of population, by age group and sex, Canada, provinces and territories, annual (persons)

Statistics Canada. Table 051-0004 - Components of Population Growth, Canada, provinces and territories, annual (persons)

Statistics Canada. Table 051-0012 - Interprovincial migrants, Canada, provinces and territories, annual (persons)

Prepared by PEI Statistics Bureau

r: revised data p: preliminary data